

ISUZU N35.150 3.5T GVW (STANDARD CAB)

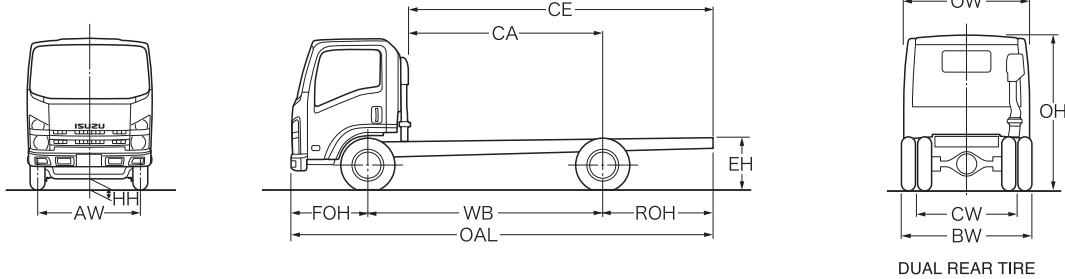
4X2 RIGID DUAL REAR WHEEL CHASSIS/CAB
EURO 4

IRL STANDARD VEHICLE PLATED WEIGHTS

GVW 3500KG
GTW 7500KG*

IRL AXLE DESIGN WEIGHTS

Front 1900KG
Rear 2200KG



	40736	40738	40740
MODEL CODE	ED5AYE	HD5AYE	HD5WYE
MODEL NAME	(Day)	(Day)	(Crewcab)
CAB TYPE			

CHASSIS CAB WEIGHT (KG)

	Front	40736	40738	40740
Vehicle Mass Unladen		1415	1440	1545
	Rear	580	625	725
Total		1995	2065	2270
GVW		3500	3500	3500
Max. Permissible Trailer Weight		3500*	3500*	3500*
Body & Payload Allowance		1505	1435	1230

	40736	40738	40740
MODEL CODE	ED5AYE	HD5AYE	HD5WYE
MODEL NAME	(Day)	(Day)	(Crewcab)
CHASSIS TYPE			

CHASSIS CAB DIMENSIONS (MM)

		40736	40738	40740
Wheelbase	WB	2480	3350	3350
Overall Length	OAL	4735	6035	6035
Overhang	Front	FOH	1110	1110
	Rear	ROH	1145	1575
Cab Gap	CB	157	157	71
C/L Front Axle to Rear of Cab	CA	455	455	455
Recommended Body Length	BL	3155	4025	3415
Max. Body Length		3255	4125	3515
Chassis Frame Width		700	700	700
Recommended Body Width		2172	2172	2172
Recommended Maximum Body Width		2172	2172	2172
Cab Width	OW	1885	1885	1885
Overall Height (Unladen)	OH	2140	2150	2150
Chassis Height (Unladen)	EH	780	780	780
Minimum Road Clearance	HH	190	190	190
Track	Front	AW	1475	1475
	Rear	CW	1425	1425
Rear Axle Width	BW	1854	1854	1854

NLR U/ 0508/ GVW 3.5 T

* Driver License and Tachograph Regulations Apply

1. Unladen weights exclude fuel, driver, spare wheel + carrier, tool kit and jack. (Tolerance +/- 3%).
2. Body lengths are given as a guide only. Bodybuilders are responsible for ensuring all legal requirements are met.
3. Maximum body lengths are calculated to remain within the maximum permitted overhang in Ireland of 60% of the wheelbase. Cab gaps may vary.
4. Isuzu Ireland shall have no liability whatsoever should the information supplied have incorrect data, descriptions or illustrations.
5. The Specifications given herein are based on the latest information available at the time this guide is released and may be changed at any time without prior notice.

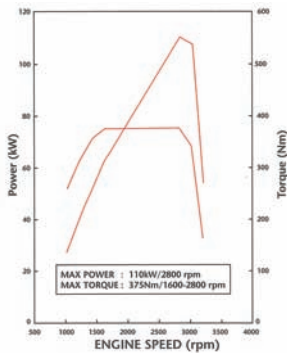
Trucks for life
ISUZU

ISUZU N35.150 3.5T GVW (STANDARD CAB)

4X2 RIGID DUAL REAR WHEEL CHASSIS/CAB

EURO 4

MECHANICAL SPECIFICATION (STANDARD EQUIPMENT)



Engine 4JJ1 TC

- Isuzu turbo intercooled DOHC 4 cylinder diesel (Euro 4)

Bore: 95.4mm

Stroke: 104.9mm

Capacity: 2999cc

Max Power: 110kW

(150bhp) at 2800rpm

Max Torque: 375N·m between 1600-2800rpm

Injection Type:

Common rail

Euro 4 Compliance:

EGR (Exhaust Gas Recirculation) with DPD (Diesel Particulate Defuser)

Fuel Tank

Capacity: 75 litres

Transmission

- 5-speed synchromesh MYYST overdrive
- **Ratios:** 1st 5.315:1
2nd 3.053:1
3rd 1.655:1
4th 1.000:1
5th 0.721:1
reverse 5.068:1

Rear Axle Ratio: 4.10:1

Tyres: 195/75 R16C radial, spare wheel and carrier

Wheels: Dual rear wheels 5.50J x 16, 5-stud

Cab Exterior

- New aerodynamic Isuzu hexapod design white all steel cab
- Manual tilt to 45 deg.
- Laminated windscreen

- Plastic resin non-slip entry steps
- 90 deg. opening cab doors
- Zinc galvanised cab frame structure
- 2 flush mounted halogen headlamps with side mounted indicators
- Front tyre mud guards with spray suppression
- Steel reinforced composite front bumper with fog lights
- Colour coder front grille
- Keyless door entry and immobiliser

Frame

Ladder type channel section straight side rails, rivetted upper flanges

Cooling

Radiator: Tube and fin type

Fan: Plastic with viscous clutch

Clutch

300mm diaphragm type with hydraulic actuation

Cab Interior

- Flame resistant interior trim
- Vinyl floor matting
- Pillar mounted entrance grab handles both sides
- SRS air bags, driver and passenger
- Ashtray for driver and passenger

Seats (all cloth)

- Drivers fully adjustable with head restraint
- Dual passenger seat with folding back centre and tray
- Driver and outer passenger retractable diagonal seat belts with pre-tensioner
- Centre seat lap belt

Vision

- Large foldable heated door mirrors
- Interior rear view mirror on collapsible mounting
- Driver and passenger sun visors
- Deep cut side windows to reduce blind spots
- Electric windows with driver control and lock

Heating & Ventilation

- 4-speed blower
- Multiple cab vents

Axles

Front: Reverse Elliott I-Beam

Rear: Banjo fully floating

Suspension

Front: Parabolic Alloy steel leaf springs with hydraulic shock absorbers fitted

Rear: Parabolic alloy steel leaf springs with hydraulic double acting telescopic shock absorbers fitted

Steering

- Recirculating ball type with full integral hydraulic power assistance
- Tilt and telescopic steering column

Brakes

System: Divided hydraulic servo-assisted with load sensing

Front: 293mm x 40v ventilated discs with asbestos free pads

Rear: 275mm x 30v ventilated discs with asbestos free pads

Park: Mechanical drum brake rear of transmission

Instruments

- Speedometer with odometer & trip
- Rev counter
- Gauges:** Fuel level and coolant temperature

Switches & Electrical

- Steering column mounted combination switch for indicators, headlamps (high beam), side and headlamp, rear fog light & front fog lamps
- Vacuum warning buzzer
- Wiper and washer (2-speed and intermittent)
- Exhaust brake
- Steering wheel horn switch
- Hazard lights
- Head lamp levelling
- Interior light
- Key operation for quick cold start, start and stop
- Engine quick warm up
- Cigarette lighter

- Central Locking
- Reverse warning buzzer in cab
- DPD engage
- Fast engine idle
- Electric window inter switch with driver side auto switch

Warning Lamps

- Battery charge
- Oil pressure
- Check brake system
- Low fuel
- Glow plug operation
- High beam and indicators
- Parking brake on
- Exhaust brake operation
- Fuel/water separator
- Check engine
- DPD engaged/warning
- Service warning
- OBD
- Front and rear fog lamps

Toolkit

4000kg jack, with a small selection of hand tools

Radio

RDS Radio/CD Player package

Storage Space

- Compartment box
- Centre console tray
- Door pockets
- Centre facia pocket
- Pop out type cup holder
- Overhead roof shelf

Ancillaries

Starter: Reduction type 24 V - 4.00 kW

Alternator: 24 V - 50 Amp

Quick Start: 4 glow-plugs on start relay

Battery: 2 x 12 V - 75AH (maintenance free)

The following optional items are available:

Isuzu Branded Mats · Suspension Seat · Satellite Navigation · Reversing Aids · Digital Tachograph
Wheelbase Extensions/Reduction · Road Speed Limiter · PTO Switch

For further information please contact your local agent, ring us directly on
01 419 4500 or visit our website **www.isuzu.ie**

ISUZU IRELAND

PO BOX 3960

NAAS ROAD

DUBLIN 12

Trucks for life

ISUZU